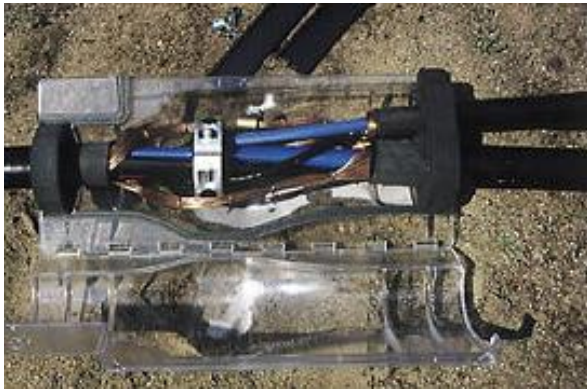


Cast resin branch off cable boxes

AM 130/300 , AM 135/300 , AVM 140/420K , AVM 140/420N , AVM 180 /500
are mainly used in combination with screw compact tap connectors.

$U_0 / U = 0,6 / 1 \text{ kV}$



Design

Divided, halogen free, hinged housing, especially designed to provide enough space for the tap connector. Parallel placed branch off cable, pre glued seals and pre cut gaskets which can be easily adjusted to cable size. Electrical and mechanical protection is achieved by RLS-W-type cast resin ISO-PUR K 2000 or fast curing ISO-FILL A2.

AVM 140/420N

Application

The belly type cable boxes are designed to branch off and connect small to large consumers. Using PVC or VPE insulated cables and screw compact tap connectors.

Mounting

Branch off and main cable are connected with compact tap connectors or single connectors. The complete mounted cable box is sealed via the large opening at the top of the cable box and afterwards closed with a sliding cap.

The cable ditch may be closed quickly since the sealing compounds are fast curing systems.

Tests

- DIN VDE 0278 part 3
- DIN VDE 0291 plan 6/97
- European norm HD 623S1 / 1.97
- KEMA-approved (10 m water pressure)
- additional high current approved (VEW-PA 003)
- each batch according to DIN / ISO 9001

Delivery

Housing, gaskets, sliding cap, mounting kit, cast resin, mounting instruction.

The cast resin can be delivered in 2-chamber bags or tins.

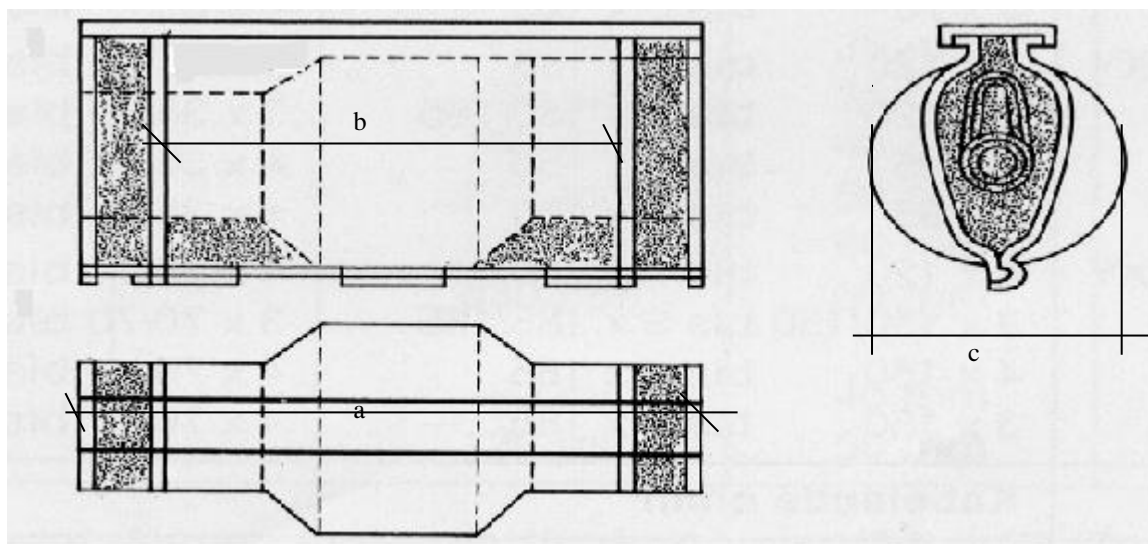
Accessories

Screw compact tap connectors, single connectors
compression connectors.

please, turn over

Measures of housing and examples of suitable cable / cable box combinations

type c / a	Outer length a (mm)	Inner length b (mm)	max. diameter c (mm)	Volume (ltr.)	max. Ø main/branch off cable (mm)	suitable cables	Main cable measures (mm ²)	Branch off cable measures (mm ²)
AM 130 / 300	300	235	130	1,9	50 / 32	N(A)YY NA2XY	4 x 16 to 4 x 150 4 x 16 to 4 x 150	4 x 16 to 4 x 70 4 x 16 to 4 x 70
AM 135 / 300	300	235	135	2,2	50 / 32	N(A)YY NA2XY	4 x 16 to 4 x 185 4 x 16 to 4 x 185	4 x 16 to 4 x 70 4 x 16 to 4 x 70
AVM 140 / 420K	420	270	140	2,9	60 / 45	N(A)YY NA2XY	4 x 50 to 4 x 185 4 x 50 to 4 x 185	4 x 16 to 4 x 70 4 x 16 to 4 x 70
AVM 140 / 420N	420	350	140	3,7	60 / 45	N(A)YY NA2XY N(A)YCWY N(A)KBA N(A)KLEY	4 x 50 to 4 x 185 4 x 50 to 4 x 185 3 x 35/35 to 3 x 150/150 4 x 35 to 4 x 120 3 x 70 to 3 x 150	4 x 16 to 4 x 95 4 x 16 to 4 x 95 3 x 25/25 to 3 x 70/70 4 x 16 to 4 x 35 4 x 16 to 4 x 50
AVM 180 / 500	500	440	180	7,5	85 / 50	N(A)YY NA2XY N(A)YCWY N(A)KBA N(A)KLEY	4 x 50 to 4 x 240 4 x 50 to 4 x 240 3 x 35/35 to 3 x 185/185 4 x 35 to 4 x 150 3 x 70 to 3 x 185	4 x 16 to 4 x 150 4 x 16 to 4 x 150 3 x 25/25 to 3 x 95/95 4 x 16 to 4 x 50 4 x 16 to 4 x 95



Example:

Measures of used cables:

Main cable NAYY 4 x 185 mm²
Branch off cable NY 4 x 50 mm²

Smallest suitable cable box:

AM 135 / 300

Edition: 17.02.15

Cast resin branch off and connection cable boxes

AVM 42/175, AVM 58/220, AVM 75/300,

$U_0 / U = 0,6 / 1 \text{ kV}$



Design

Divided, halogen free cable box in slim design. Parallel placed branch off cable, pre glued seals and pre cut gaskets which can be easily adjusted to cable size.

Electrical and mechanical protection is achieved by RLS-W-type cast resin ISO-PUR K 2000 or fast curing sealing compound ISO-FILL A2.

AVM 42 / 175 u. AVM 58 / 220

Application

According to their sizes, the branch off and connection cable boxes AVM can be used for street lighting, traffic signs, advertisements, signalling systems, or for the repair of electric appliances with plastic insulated cables.

Tests

- DIN VDE 0278 part 3
- DIN VDE 0291 plan 6/97
- European norm HD 623S1 / 1.97
- KEMA-approved (10 m water pressure)
- additional high current approved (VEW-PA 003)
- each batch controlled according to DIN / ISO 9001

Mounting

Branch off and main cable are connected with compression connectors. The complete mounted cable box is sealed *via* the large opening at the top of the cable box and afterwards closed with a sliding cap.

The cable ditch may be closed quickly since the sealing compounds are fast curing systems.

Delivery

Housing, gaskets, caps, mounting kit, cast resin, mounting instruction.

The cast resin can be delivered in 2-chamber bags or tins.

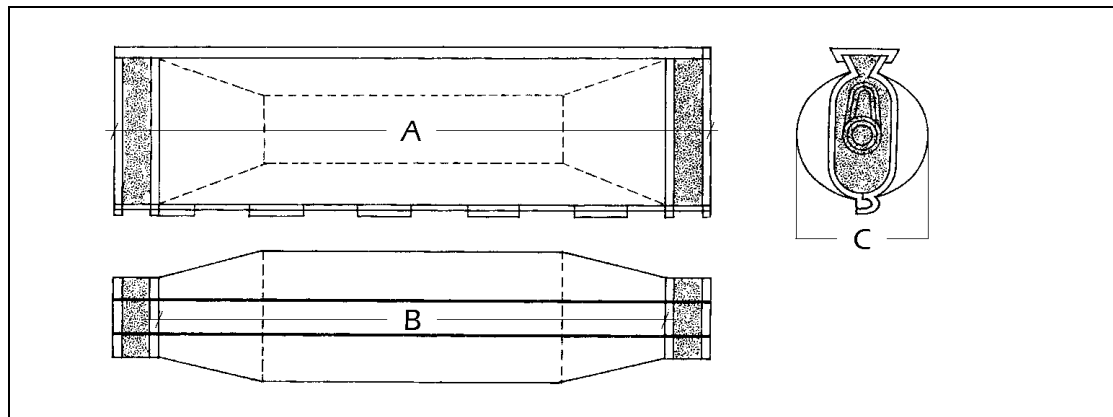
Accessories

Compression connectors, single screw connectors.

please turn over

Measures of housing and examples of suitable cable / cable box combinations

type c / a	outer length a (mm)	inner length b (mm)	max. diameter c (mm)	volume (ltr.)	max. Ø main/branch off cable (mm)	suitable cables	main cable measures (mm ²)	branch off cable measures (mm ²)
AVM 42 / 175	175	135	42	0,2	20 / 15	N(A)YY	4 x 1,5 to 4 x 6	4 x 1,5 to 4 x 4
AVM 58 / 220	220	170	58	0,5	22 / 21	N(A)YY NA2XY N(A)YCWY	4 x 1,5 to 4 x 10 4 x 1,5 to 4 x 10 3 x 4/4 to 3 x 10/10	4 x 1,5 to 4 x 10 4 x 1,5 to 4 x 10 3 x 1,5/1,5 to 3 x 10/10
AVM 75 / 300	300	225	75	1,11	29 / 22	N(A)YY NA2XY N(A)YCWY	4 x 16 to 4 x 25 4 x 16 to 4 x 25 3 x 16/16 to 3 x 25/25	4 x 6 to 4 x 16 4 x 6 to 4 x 16 3 x 6/6 to 3 x 16/16



Example:

Measures of used cables:

Main cable NAYY 4 x 10 mm²
 Branch off cable NYY 4 x 1,5 mm²
 Street lighting

Smallest suitable cable box:

AVM 58 / 220

This data sheet replaces previous issues.

Edition: 17.02.15

Our technical advice - whether verbal, in writing or by way of trials - is given in good faith but without warranty, and this also applies where proprietary rights of third parties are involved. It does not release you from the obligation to test the products supplied by us as to their suitability for the intended processes and uses. The application, use and processing of the products are beyond our control and therefore entirely your own responsibility. Should, in spite of this, liability be established for any damage, it will be limited to the value of the goods delivered by us and used by you. Of course we will provide products of consistent quality within the scope of our General Conditions of Sale and Delivery.

Cast resin branch off and connection cable boxes

AVM 95/400, AVM 112/500, AVM 125/610, AVM 160/500

$U_0 / U = 0,6 / 1 \text{ kV}$



Double house connection with AVM 125 / 610

Application

According to their sizes, the branch off and connection cable boxes AVM can be used as transition cable box connecting ground cables with plastic insulated cables, as connecting cable box, as repair box, as double branch off cable box (double house connection), or for telecommunication applications.

Tests

- DIN VDE 0278 part 3
- DIN VDE 0291 plan 6/97
- European norm HD 623S1 / 1.97
- KEMA-approved (10 m water pressure)
- additional high current approved (VEW-PA 003)
- each batch controlled according to DIN / ISO 9001

Design

Divided, halogen free cable box in slim design. Parallel placed branch off cables, pre glued seals and pre cut gaskets which can be easily adjusted to cable size. Electrical and mechanical protection is achieved by RLS-W-type cast resin ISO-PUR K 2000 or fast curing sealing compound ISO-FILL A2.

Mounting

Branch off and main cable are connected with compression connectors. Because of their size the types AVM 125/610 and AVM 160/500 can also be used with compact tap connectors. The complete mounted cable box is sealed *via* the large opening at the top of the cable box and afterwards closed with a sliding cap. The cable ditch may be closed quickly since the sealing compounds are fast curing systems.

Delivery

Housing, gaskets, sliding caps, mounting kit, cast resin, mounting instruction.
The cast resin can be delivered in 2-chamber bags or tins.

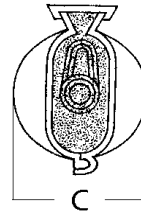
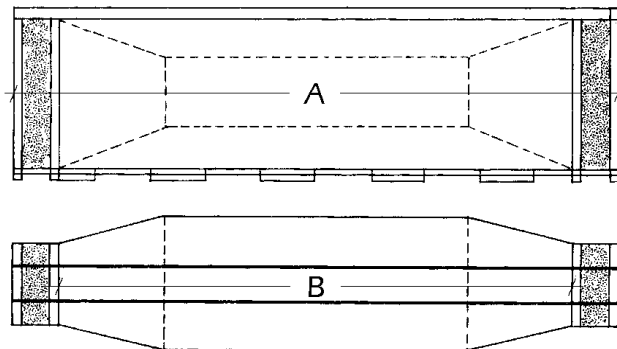
Accessories

Grounding set, screw compact tap connectors, compression connectors, single screw connectors.

Please turn over

Measures of housing and examples of suitable cable / cable box combinations

type c / a	outer length a (mm)	inner length b (mm)	max. diameter c (mm)	volume (ltr.)	max. Ø main/branch off cable (mm)	suitable cables	main cable measures (mm ²)	branch off cable measures (mm ²)
AVM 95 / 400	400	350	95	2,35	35 / 25	N(A)YY NA2XY N(A)YCWY	4 x 16 to 4 x 70 4 x 16 to 4 x 70 3 x 35/35 to 3 x 70/70	4 x 6 to 4 x 35 4 x 6 to 4 x 35 3 x 10/10 to 3 x 35/35
AVM 112 / 500	500	445	112	4,11	50 / 30	N(A)YY NA2XY N(A)YCWY N(A)KBA N(A)KLEY	4 x 70 to 4 x 150 4 x 70 to 4 x 150 3 x 70/70 to 3 x 150/150 4 x 35 to 4 x 120 3 x 70 to 3 x 120	4 x 16 to 4 x 50 4 x 16 to 4 x 50 3 x 25/25 to 3 x 50/50 4 x 25 to 4 x 35 3 x 25 to 3 x 35
AVM 125 / 610	610	540	125	6,11	58 / 35	N(A)YY NA2XY N(A)YCWY N(A)KBA N(A)KLEY	4 x 120 to 4 x 185 4 x 120 to 4 x 185 3 x 95/95 to 3 x 185/185 4 x 95 to 4 x 185 3 x 95 to 3 x 240	4 x 25 to 4 x 70 4 x 25 to 4 x 70 3 x 35/35 to 3 x 70/70 4 x 25 to 4 x 70 4 x 25 to 4 x 70
AVM 160 / 500	500	440	160	6,6	65 / 50	N(A)YY NA2XY N(A)YCWY N(A)KBA N(A)KLEY	4 x 70 to 4 x 240 4 x 70 to 4 x 240 3 x 120/120 to 3 x 185/185 4 x 120 to 4 x 185 3 x 120 to 3 x 240	4 x 50 to 4 x 150 4 x 50 to 4 x 150 3 x 70/70 to 3 x 120/120 4 x 35 to 4 x 120 4 x 35 to 4 x 120



Example:

Measures of used cables:

Cable 1: NAKLEY 3 x 150 mm²

Cable 2: NYY 4 x 150 mm²

Transition from paper to plastic insulated cables

Suitable cable box: AVM 125/610

This data sheet replaces previous issues.

Edition: 17.02.15

Our technical advice - whether verbal, in writing or by way of trials - is given in good faith but without warranty, and this also applies where proprietary rights of third parties are involved. It does not release you from the obligation to test the products supplied by us as to their suitability for the intended processes and uses. The application, use and processing of the products are beyond our control and therefore entirely your own responsibility. Should, in spite of this, liability be established for any damage, it will be limited to the value of the goods delivered by us and used by you. Of course we will provide products of consistent quality within the scope of our General Conditions of Sale and Delivery.