

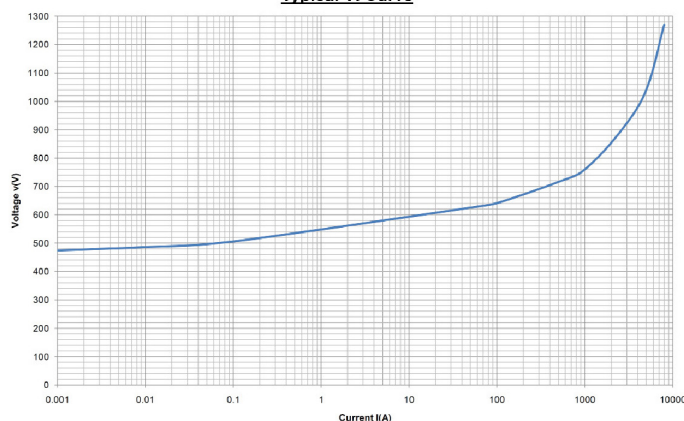
Specifications

Value	Measurement
Reference Voltage U_{ref}	420V – 500V at 1mA DC
Continuous Operating Voltage U_c	320VDC (<10 μ A) 400VDC (<50 μ A) 420VDC (<100 μ A)
Rated Voltage U_r	500VDC (\leq 1mA)
Current @ 520VDC	>20mA
Residual Voltage U_{res}	<700V @ 100A <800V @ 1000A
Effective Dynamic Resistance	0.9 Ω @ 800v 0.5 Ω @ 800v
Short Circuit Energy Integral	2 x 0.5 x 10 ⁶ A ² s 2 x 60 x 10 ⁶ A ² s
High Current Impulse	20 x 7.5kA 8/20 μ s impulse 2 x 100kA 4/10 μ s impulse
Current @ 120VDC & Superimposed 12v/75hz	<5mA
Bi-Polar Operation	Non-Polarised
Tightening Torque for M12 fitting	33Nm max
Tightening Torque for M16 fitting	80Nm max
Part Code:	PDLVL500M-KA

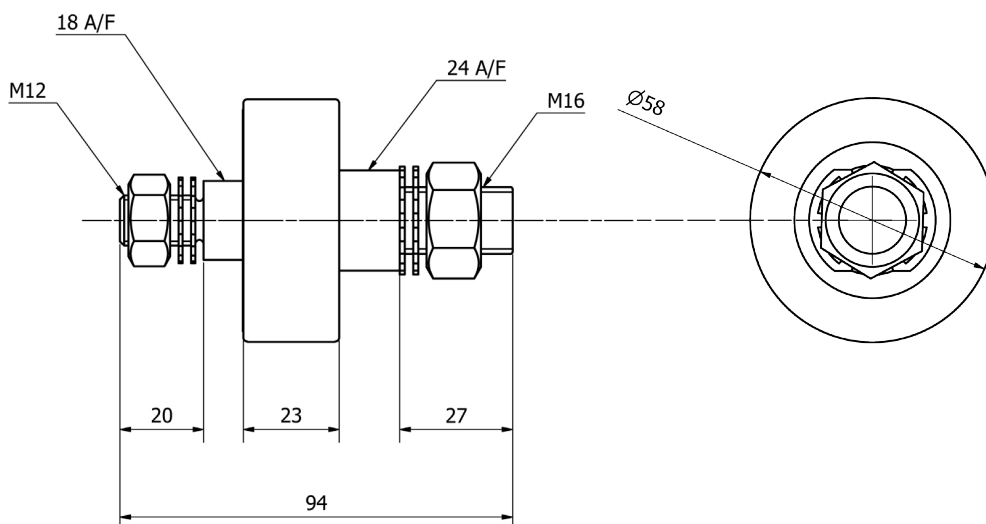
Functionaliteit te meten met Bourns tester



Typical VI Curve



Dimensions



Revision: v2, 12/11/24

Information subject to change without notice.

All of the above information, including drawings, illustrations and graphic designs, reflects our present understanding and is to the best of our knowledge and belief correct and reliable. Users, however, should independently evaluate the suitability of each product for the desired application.